

Get to Know...

NORTH VERSAILLES Outlet Store

Where?

The North Versailles Outlet Store is located at 294 Lincoln Highway, across from the Great Valley shopping center in the old Ames building.

When?

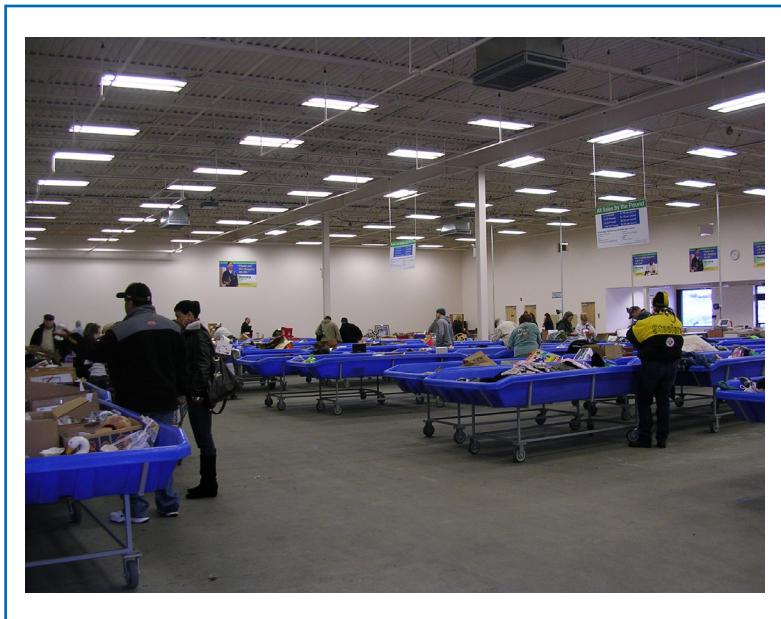
The North Versailles Outlet Store opened on November 10, 2010 and are now open 9:00am - 9:00pm, Monday through Saturday, and 11:00am - 5:00pm on Sunday.

Who?

Joyce Kunkle, General Manager, and Terry Koenig and Dawnette Barlow, Team Leaders, run the 10,000 square foot outlet store. North Versailles also has three part-time cashiers and five full-time and 17 part-time utility workers that work with the outlet store and the warehouse.

Donations?

A donation center is attached to the outlet store and is located to the left of the store.



Interesting Facts:

North Versailles has 69 tables on wheels that rotate at least 4 times a day and will be rotated 6 times a day, every two hours, once the final equipment is delivered. There are 20 tables of clothing, three tables of shoes, six tables of books and the remaining 40 are wares, purses, etc. that come from the pulls that the other Goodwill stores send.

Why is it successful?

The customers love the new merchandise rotations. North Versailles has several phone calls a day to ask when the tables will be switched. Customers stay for several hours some even go for lunch and sit in the furniture area to wait for the next rotation, or come back a second time to make sure they get the chance at the new tables. Customers buy 3 or 4 shopping carts of merchandise at a time.